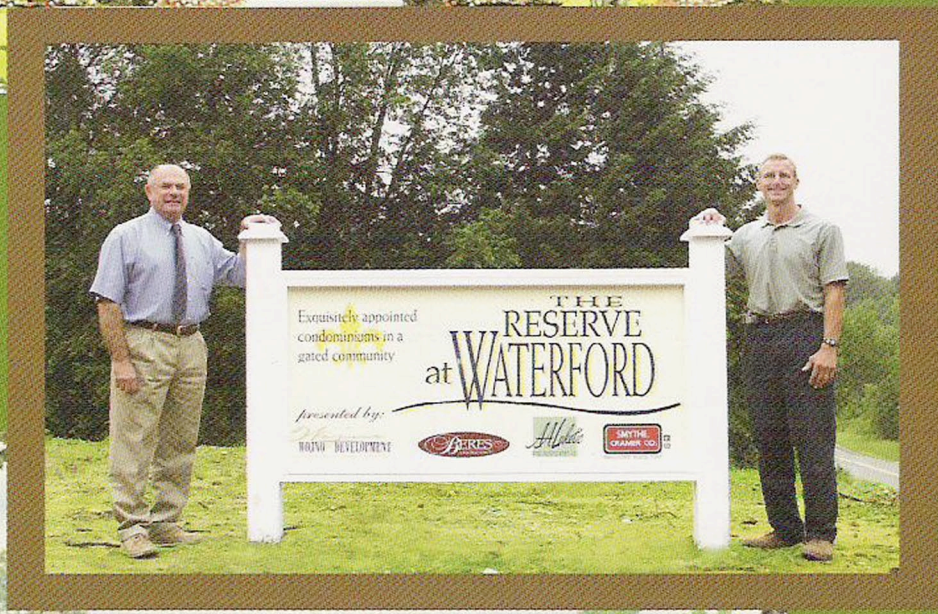


# Builder/Architect



**The Bath:**  
A Functional  
Retreat



## Beres Construction Co.

Introducing The Reserve at Waterford  
"Better Built Homes By Beres"

# Beres Construction Co.

## Introducing The Reserve at Waterford "Better Built Homes By Beres"

By L.J. Barker

Beres Construction is a well known and highly respected home building company in the Akron area that has been in business for over 50 years. Gary Beres, the second generation of the company, has continued his father John's legacy of knowledge, talent and

integrity. With an extensive list of satisfied customers, Gary has taken Beres Construction into the 21st century, continuing to build higher-end custom homes, as well as light commercial projects, at the highest level of quality and unique design.

**From the distressed hickory hardwood floor, to the custom-made door, beamed ceiling, and unique fireplace, this custom home offers examples of the custom amenities which Beres Construction is capable of incorporating into their high-end custom homes. (Buckeye Reserve Title and Attorney Ronald M. Martin provide services to Beres Construction.)**



©PHOTO BY MAJESTIC IMAGING L.T.D.



**Beres Construction has built its reputation on high-end custom homes. (Various products are supplied to Beres Construction by Wadsworth Sash & Door; waterproofing is provided by UCS dba Foundation Systems. Pavers by Belgard are provided by Akron Brick and Block. Many home sales are handled for Beres Construction by Smythe Cramer. Landscaping by Excel Landscaping.)**

Along with continuing to build custom homes on scattered sites and in various developments, Beres Construction's newest venture is The Reserve at Waterford. This new development is a gated community located in Bath Township. With up to 43 units on 29 acres, this cluster home development is a premier community almost completely enveloped by forested greens space and wetlands.

Beres Construction and Wojno Development have teamed up in a partnership for this project. Gary Beres explains, "This is a joint venture between myself and Mike Wojno, with whom I

**Gary Beres with his late father, John Beres, founder. "Blackie," also pictured, was also on the job for 11 years.**



have a long-standing friendship, and a high level of respect. Mike is dynamic and exciting. Developing land has always been his true passion."

Wojno Development Company has been a part in the development of Northeast Ohio for 30 years. While previously low key, President and owner Michael G. Wojno has decided to surface in the development business. With a small but qualified team consisting of Sue Harman, Scott Read and Katie Wojno, Wojno Development looks to create mostly unique residential developments for the small- to medium-sized builder. They are also developing a 19-lot development with 1.5 to 3 acres per lot named Cherrywood Crossing, located on Medina Line Road in the Copley School District, as well as Cranberry Creek in Brimfield. "Our goal," says Michael Wojno, "is to incorporate the development, building, selling, and home buying experience in a seamless fit that will make the homeowner say at the end of the day, 'Wow!'"

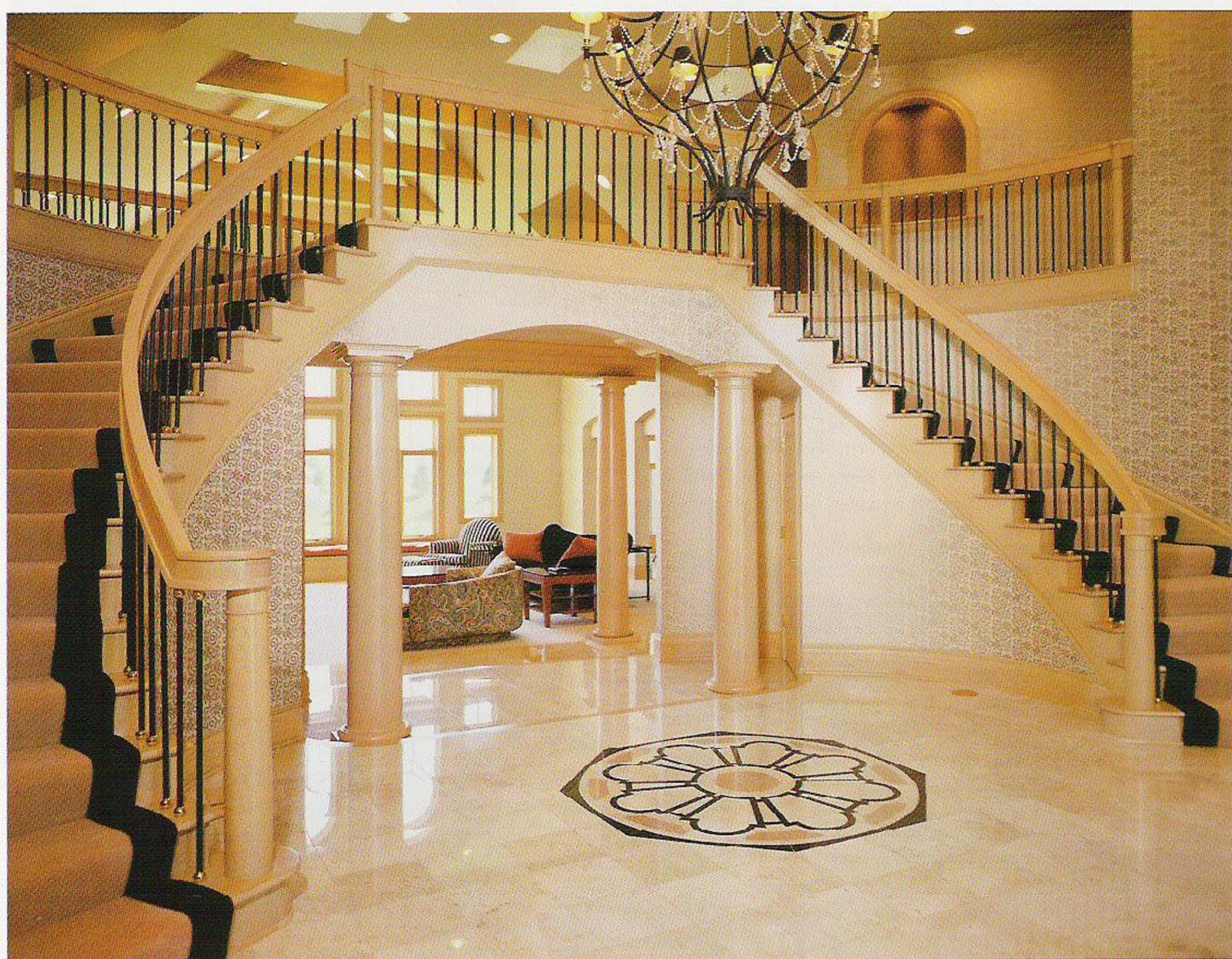
The Reserve at Waterford is a community development featuring five distinct floor plans and exteriors modeled after English cottages. The all-masonry exteriors boast a selection of four different colors of handmade brick along with antique concrete stone. The 50-year barkwood Elk shingles will be on all the homes to tie in the community atmosphere. All models boast full basements waterproofed by Foundation Systems with a 20-year guarantee, and some of the homes will have walk-out basements as well. This



"Beres hires and retains superior craftsmen who do things correctly. He and his workers are totally reliable and honest. He is not reluctant to offer his professional opinion on the best way to achieve an excellent final outcome."  
—Robert McMillan

Left: This home built by Beres Construction won first place in the HBA's 2000 Best Home Competition in the 4,001 square foot and over category.

Below: A grand foyer complete with dual staircase, inlaid marble floor and noticeable attention to every detail.



will pass through most of the green space in the entire 29 acres.

Because unsurpassed quality is the hallmark of the companies involved, not a detail has been overlooked in this project. The flooring will consist of high-grade carpeting, wood and tile; countertops in the kitchen will be made of granite, and cultured marble will be used for the bathroom counters. The homeowner will be able to choose among several different cabinetry and appliance options. In order to further integrate the home buying experience, Chez-Del Interiors will provide an interior decorator to work with the homeowner to ensure elegance and grace throughout the home.

The Reserve at Waterford is conveniently located one mile from Interstate 77 and 25 miles from Cleveland-Hopkins airport. The home and the land site costs range between \$500,000 and \$1 million. The average price per square foot is under \$200 including the land. Two model homes are underway at present. Eventually there will be five models at this location. Attached and freestanding units, two-story and ranch-style homes are available. An



**In this master suite in a custom home built by Beres Construction, you'll find a one-of-a-kind fireplace, a lighted tray ceiling and French doors leading to a deck.**

**This custom home by Beres Construction won the first place award in the 4,501 square foot to 5,000 square foot category in the HBA's Best Homes Competition in 2002.**



"Beres Construction is a quality building team. They were sensitive to our needs; they listened. Their attention to detail was beyond belief. The fact that they have used the same subcontractors and suppliers for a long time gave us a stronger sense of confidence also. We would definitely build with Beres Construction again...in a heartbeat!"

—Thomas and Lorena Clark

association will be set up through Wojno Development which will allow for maintenance-free living.

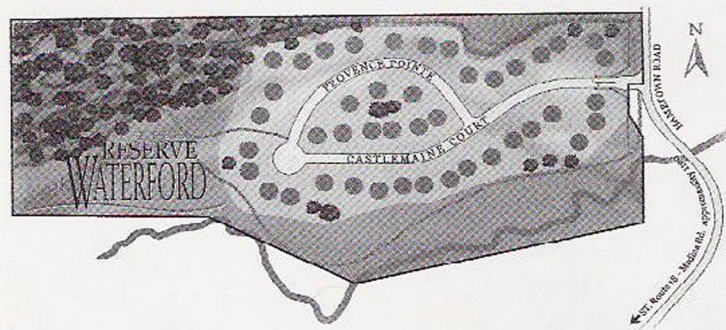
Gary Beres adds, "Over the years, there is nothing that we haven't done. Higher end custom homes are our main focus, but we also work on commercial projects, multifamily homes, and even elaborate horse barns. I started working with my father when I was just a child, sweeping, digging — the dirty jobs. He taught me everything, especially integrity. He'd say, 'Do it right, or just don't do it at all!' I still live by that philosophy."

Beres Construction builds in Summit County, Medina, Richfield, Copley, Bath and surrounding areas. Occasionally building a home on speculation, most of their custom homes are in the \$1 million to \$2.5 million range. Only building seven to 12 homes per year allows the company to maintain quality control.

Gary Beres appreciates his employees, suppliers and subcontractors, and credits them for the company's success. They



This custom kitchen is complete with hearth room, a huge center island, granite countertops, and a very unique ceiling design. (Cabinets provided by Schrocks' of Walnut Creek; appliances supplied by Interstate Kitchen Supply; plumbing supplies and services are provided by Lowry Plumbing.)



The Reserve at Waterford.

appreciate him as well. Greg Stewart of Wadsworth Sash & Door told us, "There aren't too many people in this industry with the kind of ethics possessed by Gary Beres. There just aren't any better!"

Beres Construction is a member of the Home Builders Association Serving Portage and Summit Counties, and has won many awards in their Best Homes competitions.

In closing, Gary stated, "We still offer old-fashioned service. That's the way I want it. We are extremely customer-oriented. Our customers can call me at home, anytime. I'm a very hands-on type of guy. We have the ability to build the custom home our customers desire."

For more information on Beres Construction, call (330) 670-1157. ■